



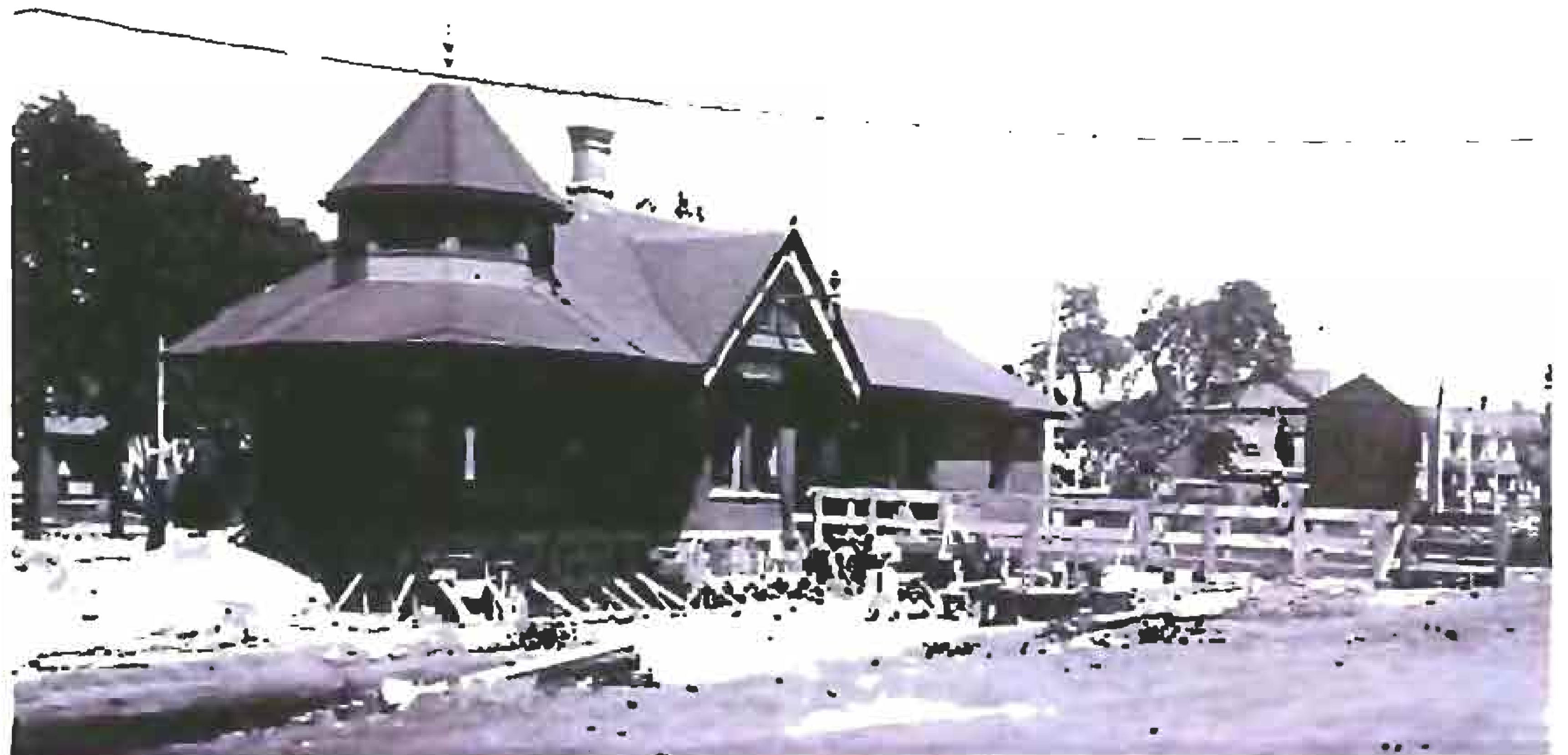
## The Riverdale Station

And the history of the RHS Logo, with *new* historical information. By Gerald Whyte



Riverdale Station c. 1910. De Grassi St. at left, Queen St. E. in foreground.  
City of Toronto Archives, Fonds 1244, Item 3589

The level crossing on Queen Street, just south of the station, was protected by large gates which an attendant lowered to protect street traffic. On November 17, 1904, the gates were lowered for the fast freight from Montreal. Unfortunately the Toronto Railway Company wooden streetcar 642 carrying 20 passengers broke through the gates. The freight hit the streetcar killing 4 and injuring 16. This event underlined the necessity to eliminate dangerous level crossings. On September 11, 1926, four runaway freight cars crashed into a crowded TTC streetcar. Two days after the accident, construction was to begin on a Queen Street underpass, part of the new Waterfront Viaduct Project to address the level crossing danger. As part of the project the Riverdale Station had to be moved some distance north, closer to Wardell Street, and a pedestrian underpass was built under the elevated tracks at the station.



June 1926. After move to new site, now Bruce Mackey Park.  
City of Toronto Archives, Series 372, SubSeries 79, Item 67

The project was completed in 1927 but created problems for passengers using the Riverdale Station, which was now below the line at street level. It also led to the demolition of houses on the east side of Wardell Street to accommodate the higher tracks. The Station was closed in 1932 and over the years was used as a gospel hall, a carpet factory, a taxi office, a grape seller and a heating company. The Riverdale Station was demolished in 1974 by the C.N.R., the successor to the Grand Trunk Railway.

While the demolition of the Riverdale Station marked the loss of an important part of the built heritage of Riverdale, the adoption of the Station as the logo of the Society allows us to remember the days when Riverdale had its own railway station and was a part of the national transportation network. It also helps us to guard against other such heritage losses in our community.

With historical notes from Derek Boles



December 1930. The completed embankment/underpass at De Grassi.  
City of Toronto Archives, Series 372, SubSeries 79, Item 601



## ? Did You Know ?



**Don Station, 1910**

*City of Toronto Archives, Fonds 1231, Item 72*

Early 20<sup>th</sup> century Riverdalianians were served not just by the CNR Riverdale Station at De Grassi, but also by the CPR Don Station, on the west bank of the Don River, just south of Queen Street. Readers may remember seeing it in a museum setting at Todmorden Mills, where it was moved to in the 1960's. In December 2008 it was dismantled and moved yet again, this time to the City of Toronto's Roundhouse Park at the foot of the CN tower, where it will be showcased with other railway structures as part of the Toronto Railway Heritage Centre.

## A Word from Our President



*Illustration by Eliane Duvékol*

Welcome to the second issue of *The Riverdalian*. We hope you enjoy these reports of activities of the Riverdale Historical Society and the articles on the history of Riverdale. In our research for this month's article on the background of our logo, we discovered some previously unknown information about the Riverdale Station. It adds to the interest in this particular aspect of Riverdale history and demonstrates that there may always be something new to discover from the past.

One event of interest was our participation with Councillor Fletcher in a Jane's Walk on Sunday 5 May. The walk along Queen Street East from the Jimmie Simpson Centre to the Don Bridge covered the area of a proposed Heritage Preservation District. We are also assisting in the research for the district. The walk was attended by about 140 people.

*Gerald Whyte, President*

## History on a Plate!

### Recipes for summer entertaining from the Riverdale Almanac, 1908

**Hoe Cake** - pour boiling water over one and a half cups of cornmeal, a little salt and one tablespoon of lard or butter. Cover over and let stand for two hours, then add the yolks of three eggs beaten up with half cup of milk, one teaspoon of baking powder, lastly the beaten whites of three eggs. Bake for half an hour.

**Chocolate Cake** - one cup of grated Bakers chocolate, half cup sweet milk, three-quarters cup brown sugar, yolk of one egg, one teaspoon vanilla. Cook slowly like a cream, cool, then add the following: half cup butter, one cup of brown sugar, two eggs, half cup milk, two cups flour, in which sift one teaspoon baking soda. Bake in a slow oven.

**Blackberry Pudding (Steamed)** - soak two cups stale bread crumbs in two cups milk. Add a little salt and three well beaten eggs, and one and a half cups of sifted flour, half teaspoon baking soda, one and a half pints of blackberries. Put in a buttered pudding dish and steam two hours. Serve with rich sauce.



*City of Toronto Archives, Fonds 1244, Item 3589*

# Upcoming RHS Events

*Browse, Eat and Spend!* at our **Annual Yard Sale**  
Saturday 5 June at 59 Withrow Avenue - 8 am to 1 pm

### Coming This Fall:

- September 28th: "The History of the Gerrard Street Chinatown"
- October 2nd: A Walking tour of Riverdale
- October 26th: "The History of the Riverdale Branch Library"

### BECOME A MEMBER!

Memberships are only \$10 a year. You can email us at: [riverdalehistoricalsociety@sympatico.ca](mailto:riverdalehistoricalsociety@sympatico.ca)

### KEEP UP TO DATE!

Visit our website at: [riverdalehistoricalsociety.com](http://riverdalehistoricalsociety.com)

Editor: Bill Hubacheck

### Become a *Friend of the Riverdale Historical Society*

Benefits include opportunities to learn research methods and/or to participate in the organizing of events. For more information please contact: [susanp@pathcom.com](mailto:susanp@pathcom.com) or Gerald Whyte at 416-466-2478.

